

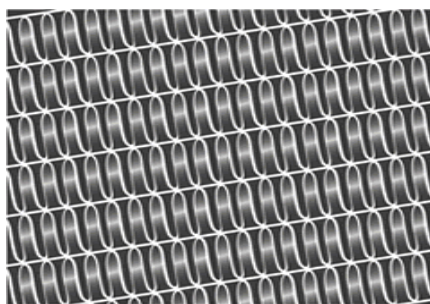
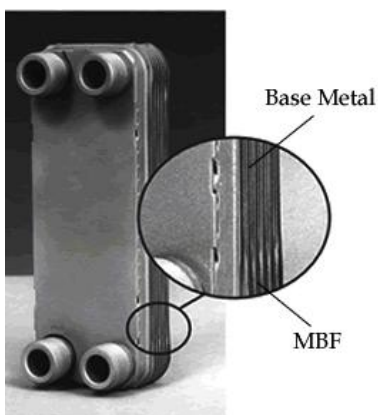
As the world's leading producer of Amorphous Brazing Filler Metals, Metglas, Inc. continues to expand brazing alloy compositions suitable for the most demanding applications. Our newest, 100% metallic, ductile foils, MBF601 and MBF602, offer high strength, excellent corrosion resistance, quick processing, and low melting temperatures. Additionally, all Metglas Brazing Foils (MBF's) are now available in optional flangeless packaging.

New MBF601 and MBF602 Alloy Composition

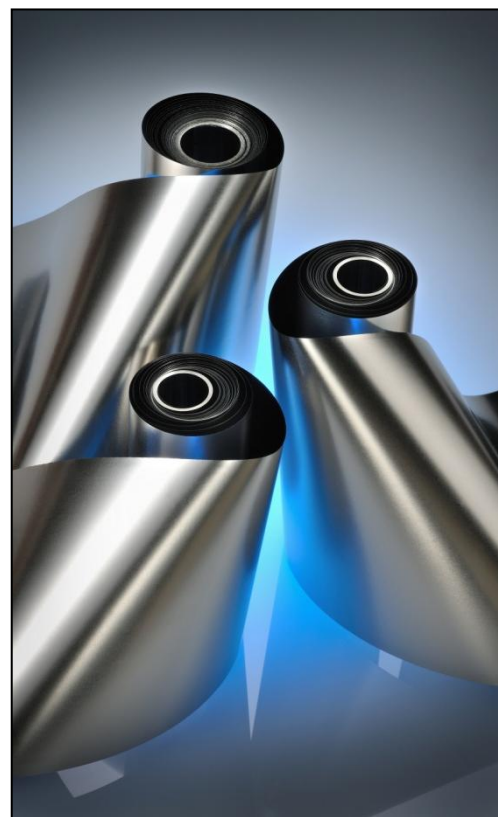
Amorphous Metals Designation	Nominal Composition, wt %							Temperature °C (°F)		Mass Density g/cm ³
	Ni	Cr	Fe	Si	B	P	Mo	Solidus	Liquidus	
MBF601	Bal	16	32	1.5	0.5	6.0	1.5	960 (1760)	1030 (1886)	7.57
MBF602	Bal	11	35	1.5	0.5	6.0	1.5	910 (1670)	1020 (1868)	7.60

Available Geometry

Maximum Width by Thickness			
Amorphous Metals Designation	Standard Foil Thickness		
	0.0010" (25.4 µm)	0.0015" (38.1 µm)	0.0020" (50.8 µm)
MBF601* *Tentative	6.7" (170.18 mm)	8.5" (215.9 mm)	-
MBF602* *Tentative	6.7" (170.18 mm)	8.5" (215.9 mm)	-



Metglas Brazing Foils offer excellent wetting and flow to fill all voids in the large number of joints in a typical plate fin heat exchanger.



Metglas® Brazing Foil Outperforms Alternative Filler Metals

Ref: MBFPL10_15_2015

www.metglas.com
metglas@metglas.com
 1-800-581-7654

Copyright © 2015 Metglas®, Inc.
 All Rights Reserved

1) HEAT RECYCLER

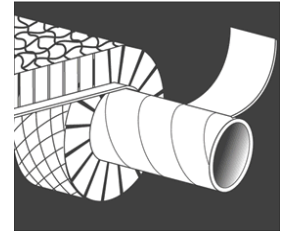
Waste heat recovery systems are gaining popularity because of rising energy costs. This finned tube heat exchanger recovers waste heat as steam for a Rankine cycle turbine.

Brazing Application

Fins must be brazed up to 30m of indivisible lengths to the tube. Approximately 22 km of tubing may be used in a single exchanger. High flexibility and the ability to resist tension and crushing during assembly are crucial. High strength, corrosion resistant joints with a uniform thickness are essential. Brazing filler metals in powder and powder-binder composites are poor candidates because of contaminating residues and possible joint shrinkage.

Solution

MBF offer the advantage of a completely automated process, purity and consistent thickness. Each tube is rotated to wrap it with foil and fin. The machine tensions brazing foil and fin stock as it turns the tube. The fins are crimped at one edge which is pressed tightly against the brazing foil. The assembly is moving continuously through an induction heating station under the cover of pure Nitrogen. Brazing occurs when the assembly passes through the high powered heating zone at 1065°C for 1–2 minutes. Easy automation and low manufacturing costs are provided.



Tube is wrapped with MBF and fin stock in an automated brazing process

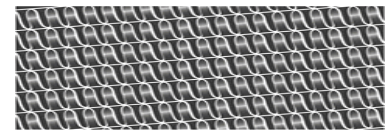
2) PLATE-FIN HEAT EXCHANGERS

Brazing Application

High efficiency use in demanding installations where light weight, corrosion resistant and high performance are necessary, such as aerospace and automotive exhaust applications.

Solution

MBF foil thickness can be controlled to provide at least 15% weight savings over similar powder alloys. Without binders or adhesives, the MBF joint is typically stronger than comparable powder, paste or tape joints by insuring clean, consistent, non-porous and complete joint coverage.



Metglas Brazing Foils offer excellent wetting and flow to fill all voids in the large number of joints in a typical plate fin heat exchanger.

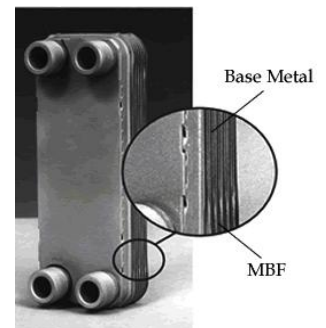
3) PLATE-PLATE HEAT EXCHANGERS

Brazing Application

The ability to resist corrosion in deionized water, ammonia, and other harsh chemical systems while sustaining design pressures up to 1760 psi (120 bar).

Solution

MBF series alloys are corrosion resistant to ammonia and other corrosive environments. High resistance to sulfuric, phosphoric, and nitric acids make MBF foil an ideal brazing filler metal for austenitic stainless steels.



Contact Information

Americas

Metglas Inc,
440 Allied Drive
Conway, SC 29526
Tel: (800) 581-7654
Fax: (843) 349-6815
metglas@metglas.com

Asia

Hitachi Metals Taiwan
11F, No 9, Xiang Yang Road
Taipei, Taiwan
Tel: +866 2 2311 2777
Fax: +886 2 2381 5210
metglas-asia@metglas.com

Europe

Hitachi Metals Europe GmbH
Immermannstrasse 14-16
D-40210 Düsseldorf
Germany
Tel: +49 211 160 0911
Fax: +49 211 160 0930
metglas-europe@metglas.com

India

Hitachi Metals (India) Pvt. Ltd.
Plot No. 94 & 95, Sector 8, IMT
Manesar, Guragon
122050, India
Tel: +91 244 812300
Fax: +91 242 290015
metglas-india@metglas.com

Japan

Hitachi Metals Trading, Ltd.
Shinagawa Season Terrace 23F,
2-70 Konan 1-chome, Minato-ku,
Tokyo, Japan 108-0075
Tel: +81 3 6774-4007
Fax: +81 3 6774-4290
metglasjapan@metglas.com

Metglas® Braze Filler Metal Outperforms Alternative Filler Metals

Ref: MBFPL10_15_2015

www.metglas.com
metglas@metglas.com
1-800-581-7654